

# **Amending Development Control Plan (Austral ILP Amendment)**

**(Pre-Gateway) May 2019**

## **Schedule 1**

**Austral & Leppington North  
Precincts**



Note this draft DCP omits text and figures which are not intended to be amended. Several sections objectives and controls have not been reproduced in this document, only sections of relevance have been displayed. Text which is to be inserted is shown in green and underlined, text which is to be deleted is shown in ~~red with~~ ~~strike through~~, explanatory notes are shown in *blue italics*.

# Contents

2	Development planning and design	2
2.2	Referenced Figures	2



## 2 Development planning and design

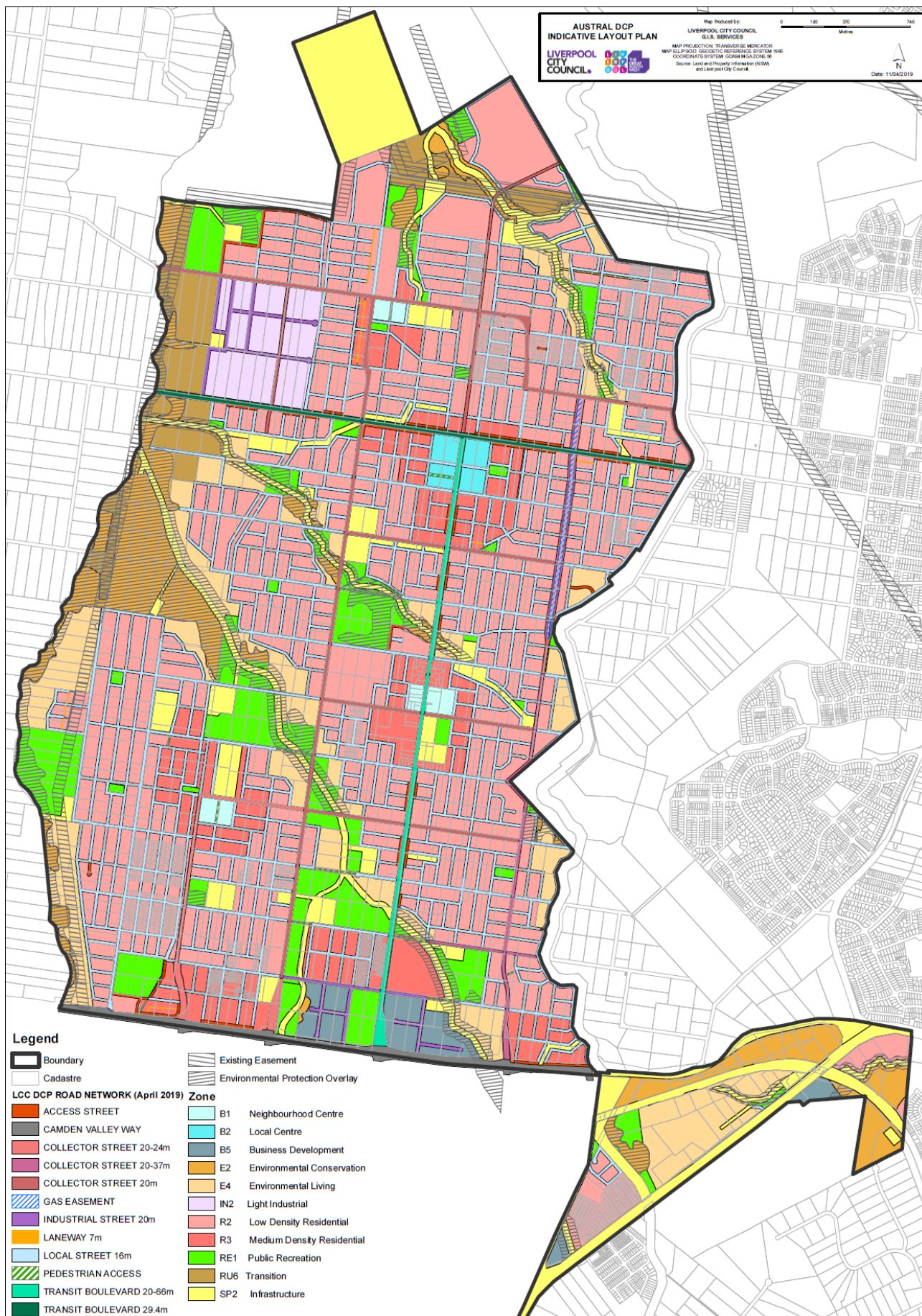
### 2.2 Referenced Figures

The figures included in this section are those referenced in **Part 2 Precinct Planning Outcomes**, and **Part 3 Neighbourhood and Subdivision Design**, of the main body of the DCP. For some figures, more detailed information relating to the Leppington Major Centre is contained in **Schedule 2**, and should also be referenced for developments in the Major Centre.







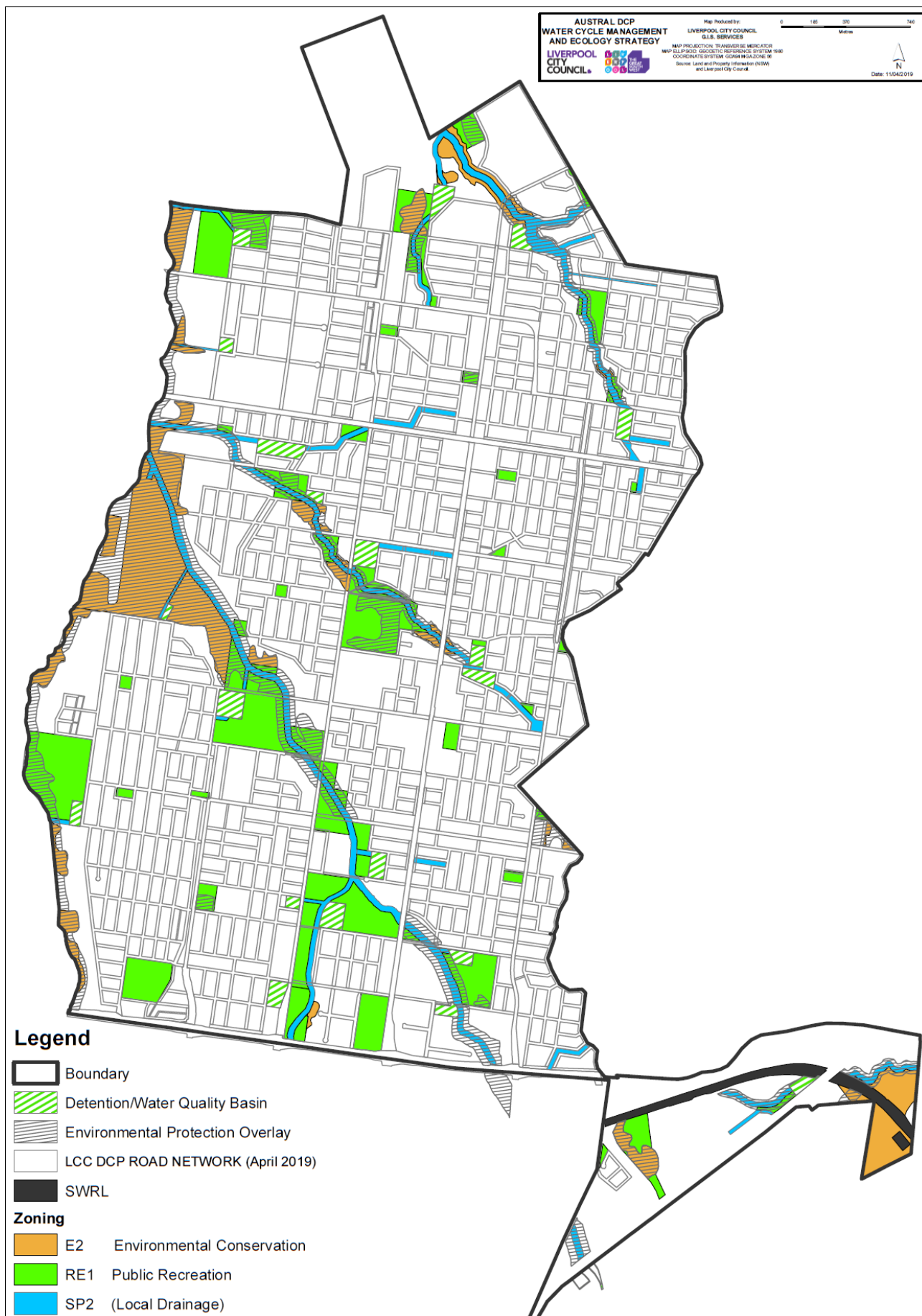


**Figure 2-1: Indicative Layout Plan**

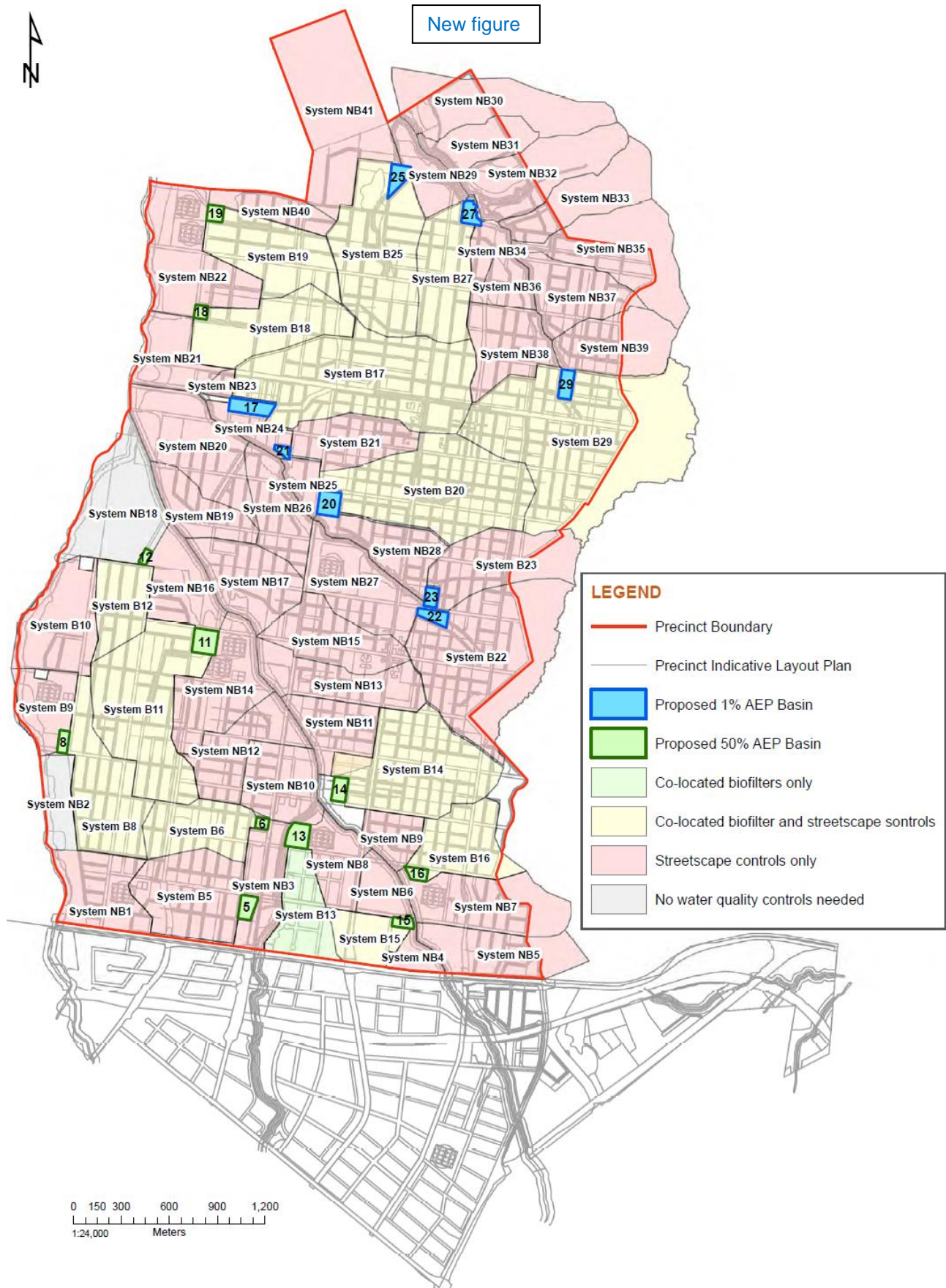






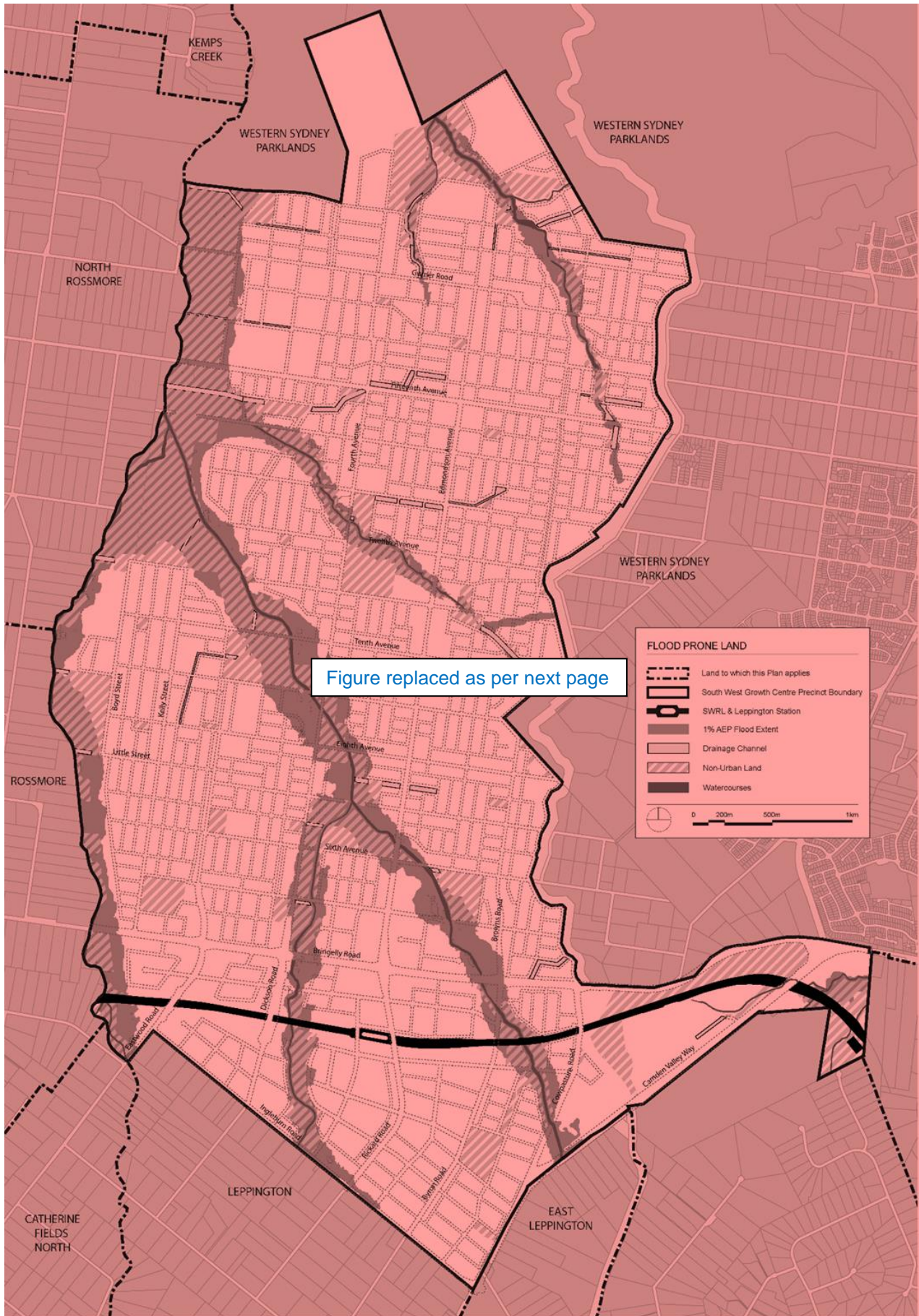


**Figure 2-2:** Key elements of the water cycle management and ecology strategy

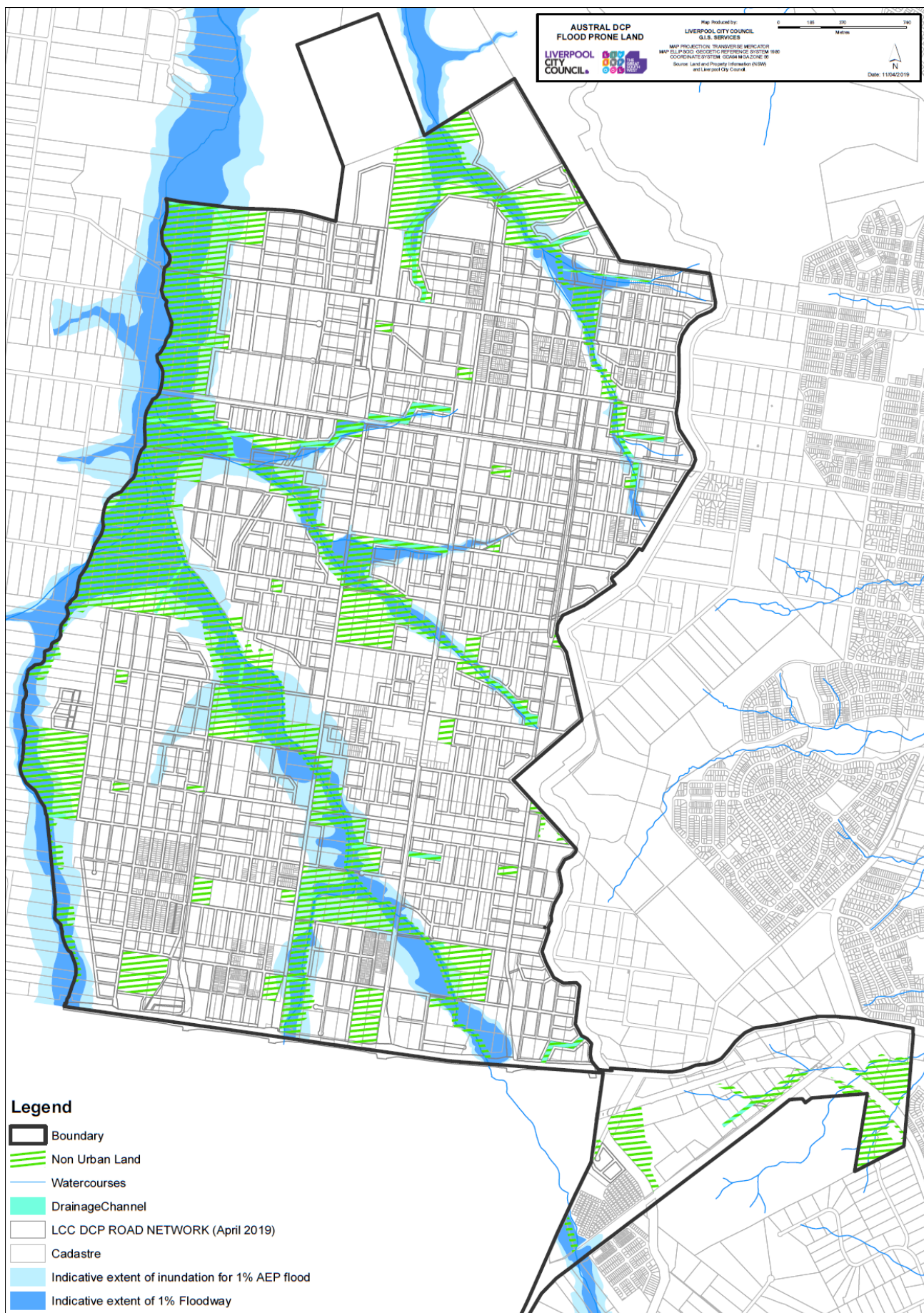


**Figure 2-3: Proposed Water Quality Control Strategy**





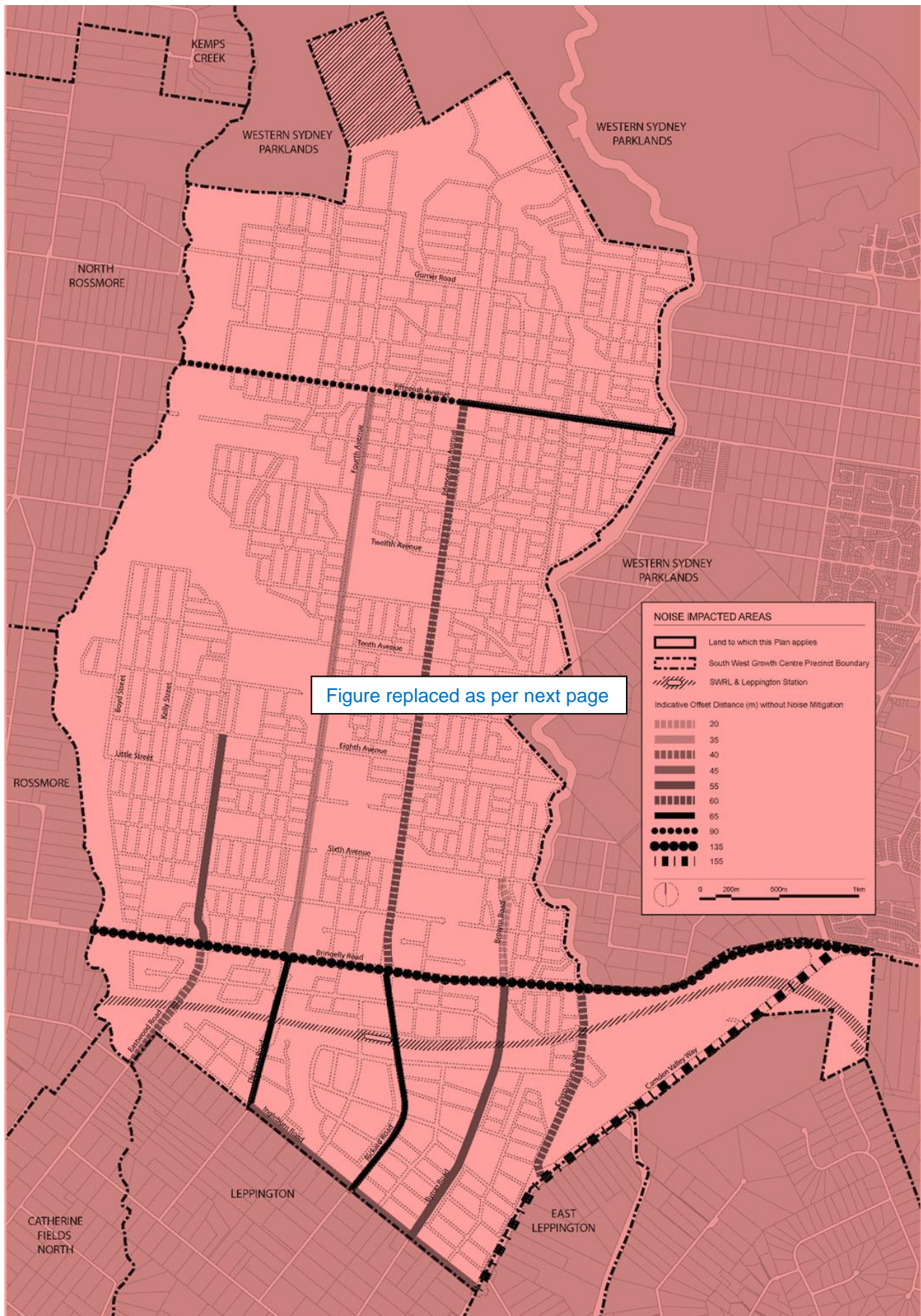




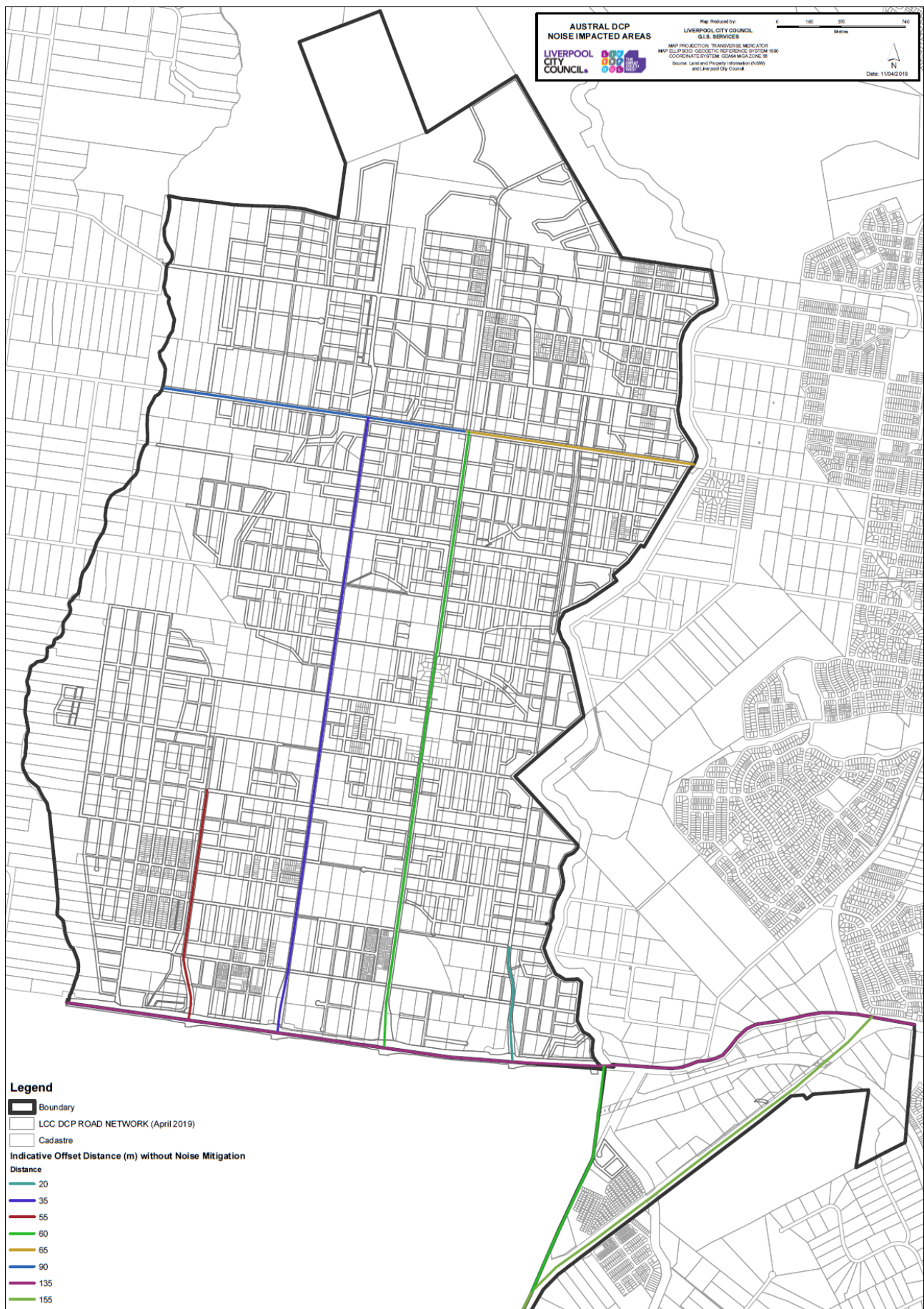
**Figure 2-3 2-4:** Flood prone land

*Figures 2-4 to 2-8 renumbered to 2-5 to 2-9. No changes to salinity map, Aboriginal cultural heritage site map, European cultural heritage map, bushfire risk and asset protection zone requirements map, and potential contamination risk ranking map.*





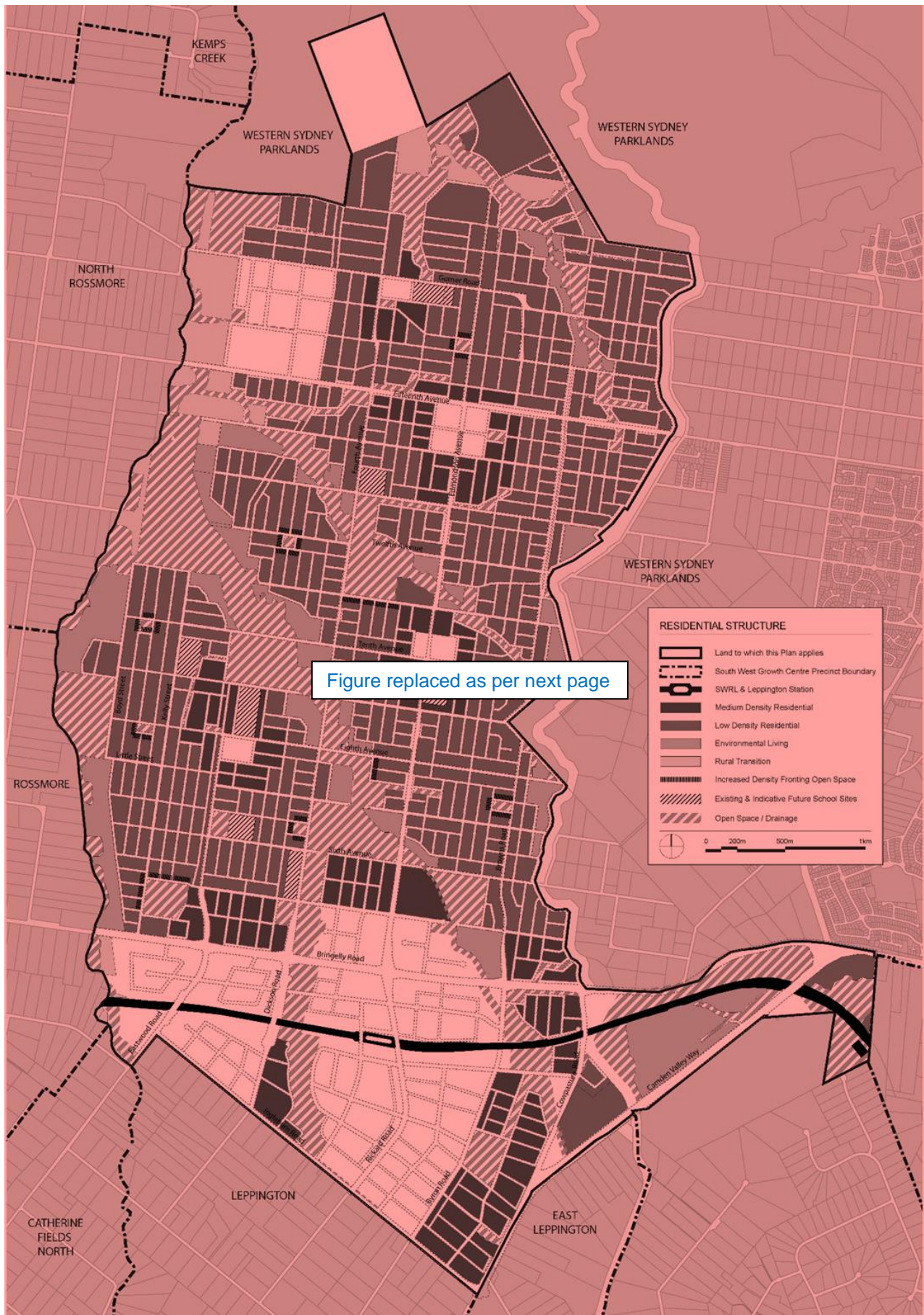




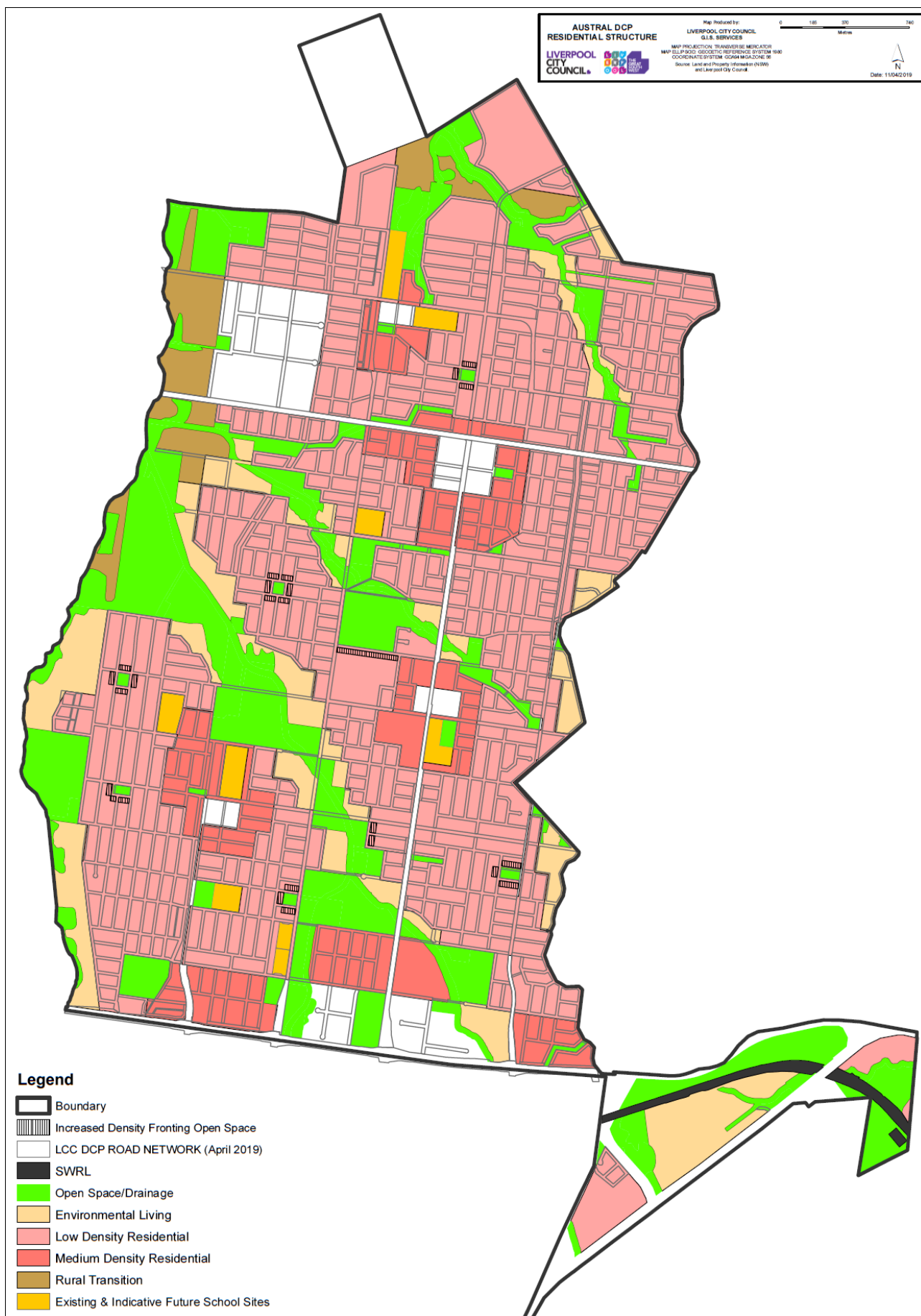
**Figure 2-9 2-10:** Potential noise attenuation measures



*Figure 2-10 renumbered to 2-11 (Location of easements)*







**Figure 2-44 2-12: Residential structure**

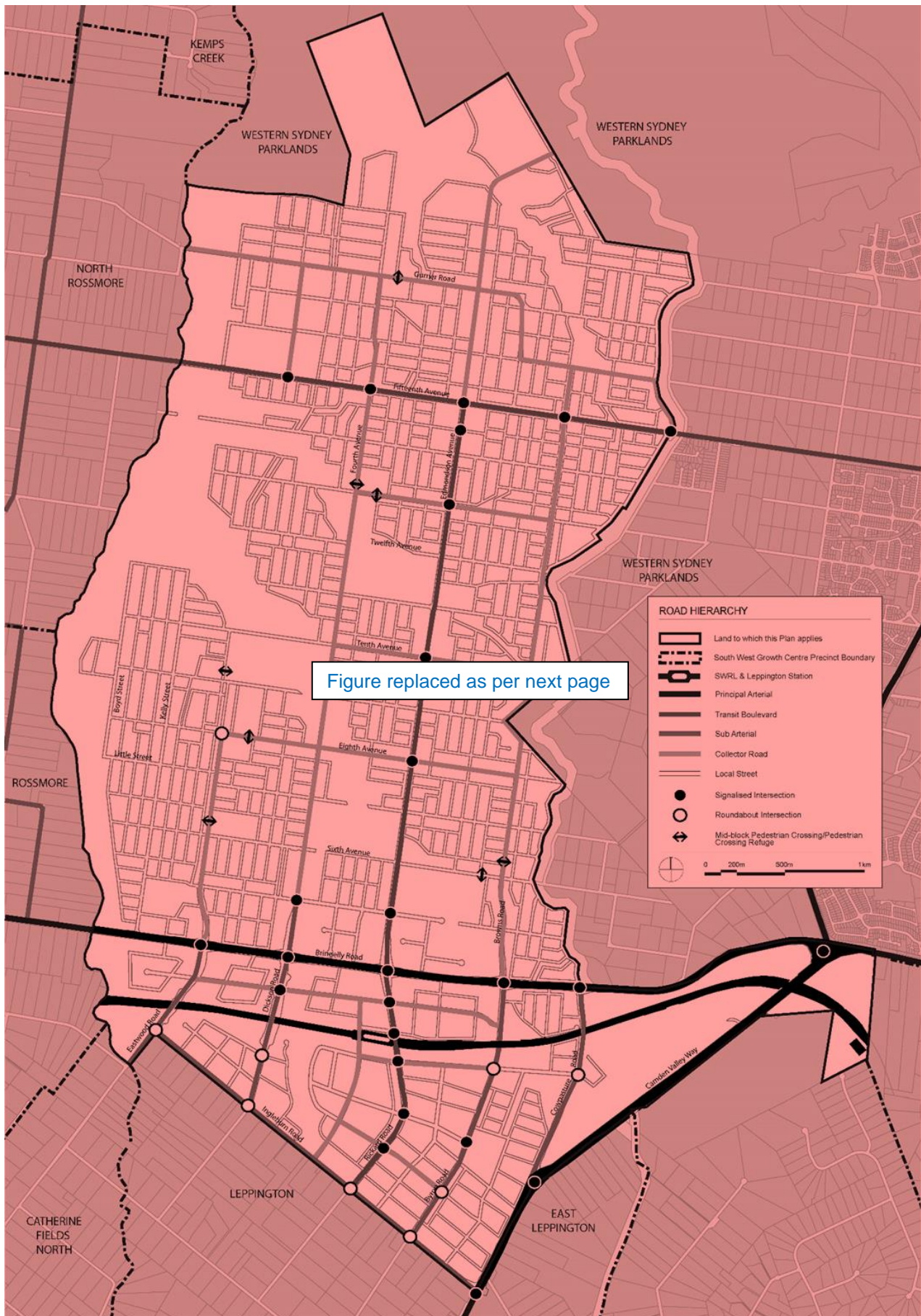


Figure replaced as per next page



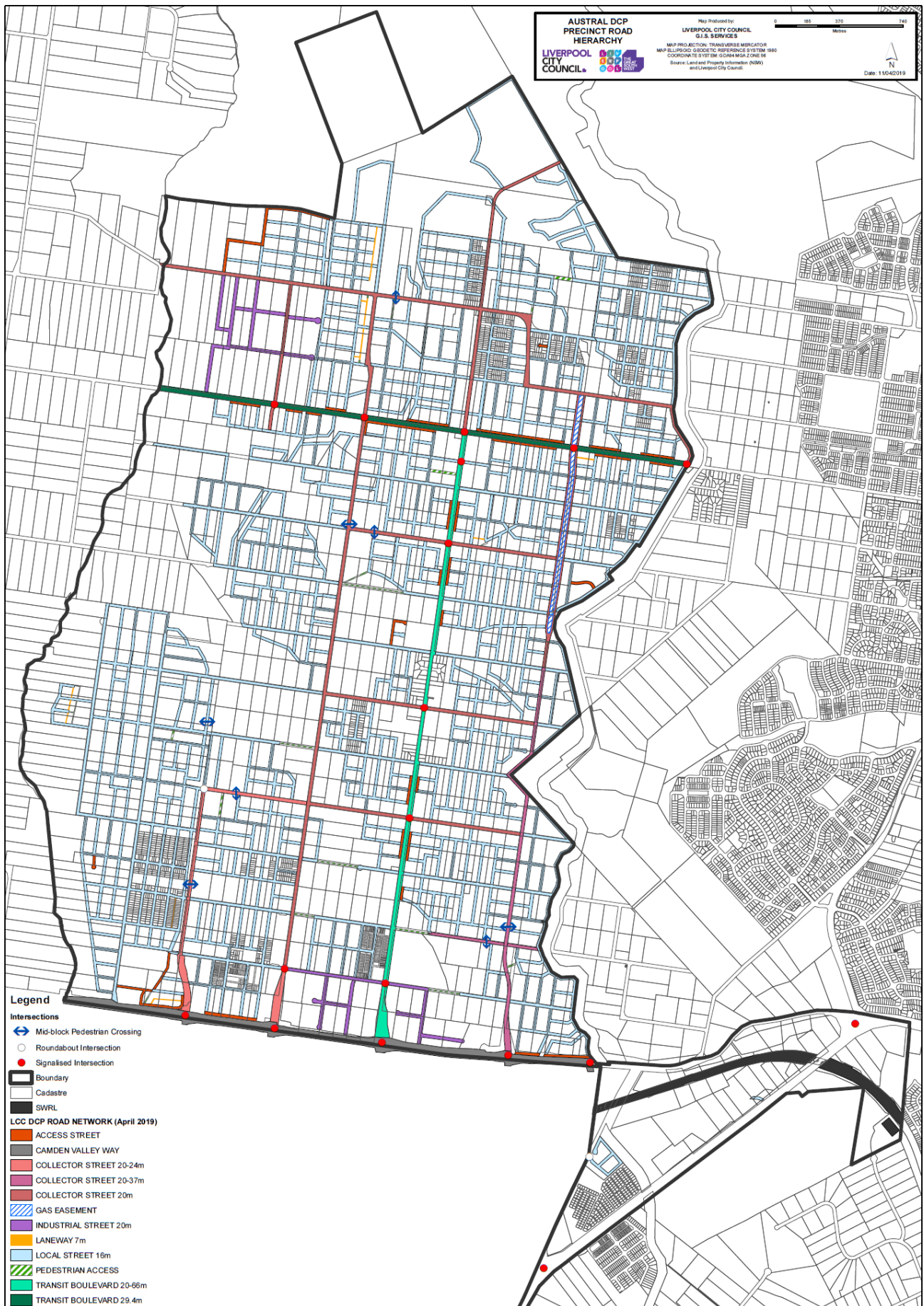


Figure 2-42 2-13: Precinct road hierarchy







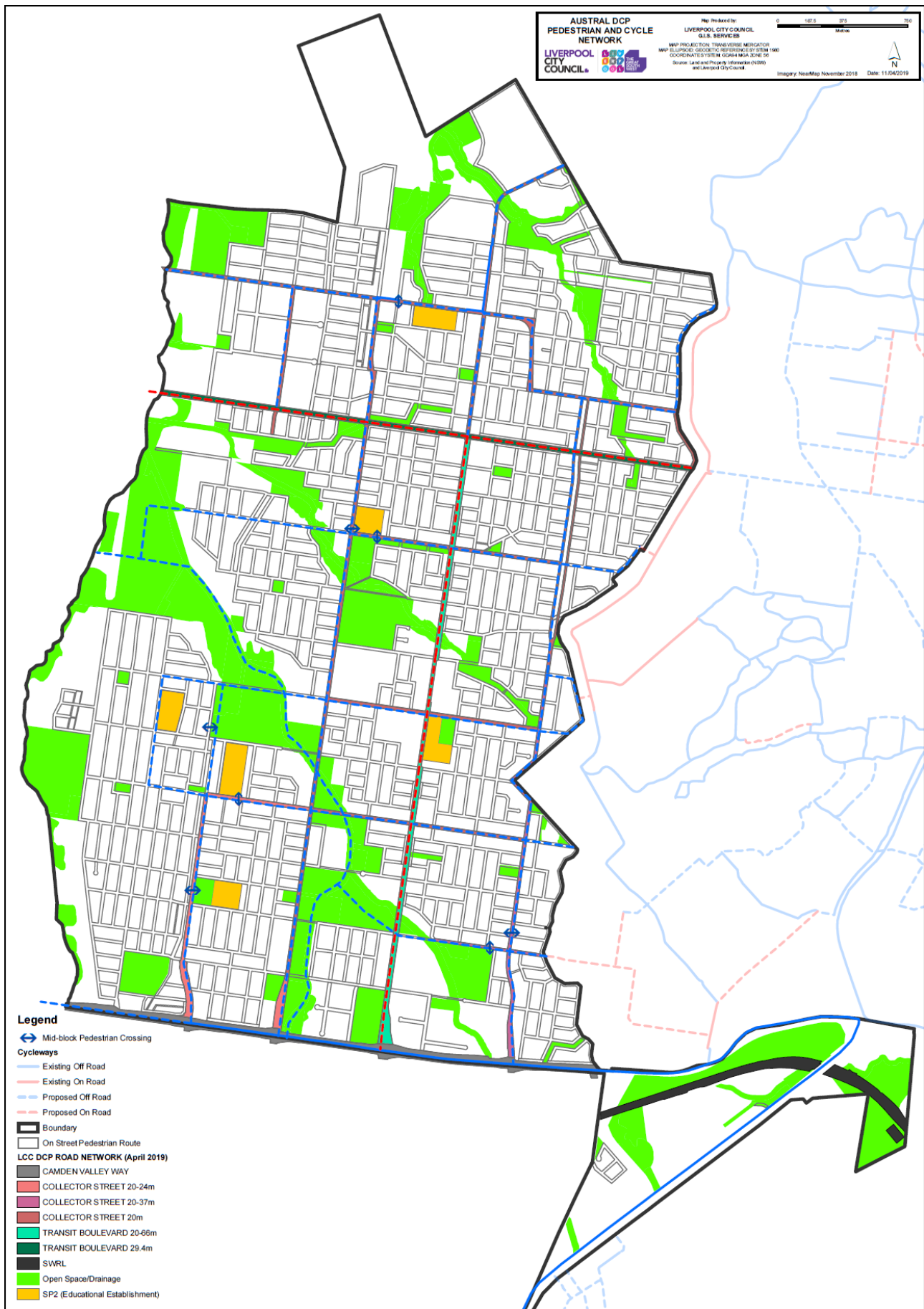


Figure 2-13-2-14: Pedestrian and cycle network